

VMECA VACUUM CARTRIDGE

VCL302

Features and Strengths

- Two stage – VMECA midi cartridge
- Large vacuum flow in efficient air consumption
- International patent
- Reliable performance despite inconsistent compressed air pressure



Specifications

Description	VCL302
Max. Vacuum level	-75 kPa
Open Vacuum flow	200 NI/min
Max. Feed pressure	7 bar
Temperature	-20 ~ 80 °C
Material	PPS, POM, NBR, AL(Holding plug)
Weight	12.14 g

Vacuum Flow

Model	Max. vacuum (-kPa)	Feed Pressure (bar)	Vacuum flow (NI/min) at different vacuum levels (-kPa)									
			0	10	20	30	40	50	60	70	80	90
VCL302	60	4	188	158	110	70	46	28	6.8	-	-	-
	70	5	195	176	130	82	50	37.5	23	11.3	-	-
	75	6	200	183	154	100	52	38	32	22	-	-

Evacuation Time

Model	Feed Pressure (bar)	Air Consumption (NI/min)	Evacuation time in sec / liter to reach different vacuum levels (-kPa)									
			10	20	30	40	50	60	70	80	90	
VCL302	4	70	0.035	0.084	0.17	0.29	0.38	0.8	-	-	-	
	5	85	0.027	0.08	0.15	0.25	0.3	0.4	0.8	-	-	
	6	104	0.028	0.08	0.12	0.2	0.28	0.36	0.6	-	-	

Build an Ordering No.

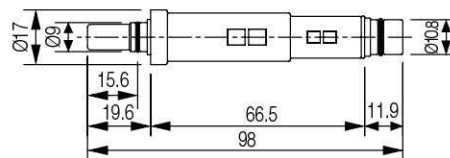
1. Cartridge	Description	Ordering No.
	Midi vacuum "L" cartridge, 3-stage	VCL302
	Midi vacuum "L" cartridge, 3-stage, Non-return valve	VCL302-N
	Midi vacuum "L" cartridge, 3-stage, Holding plug	VCL302P
	Midi vacuum "L" cartridge, 3-stage, Holding plug, Non-return valve	VCL302P-N

Spare Parts – Plug

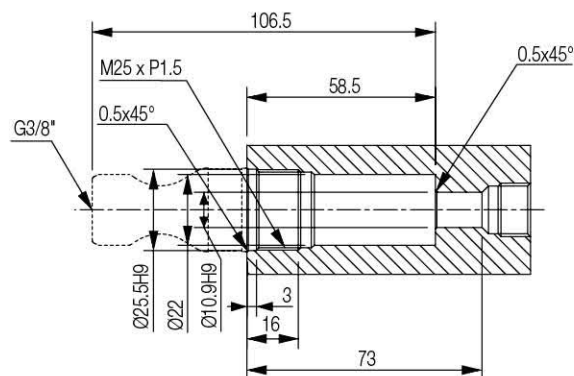
Model	Description	Weight (g)
VCP-M25-302	Holding plug	31.04

Dimension - Basic Pump

[Unit : mm]



VCL302P



VCL302P