

VMECA VACUUM CARTRIDGE

VCX303

Features and Strengths

- Three stage – VMECA midi cartridge
- Deep end vacuum level upto -95kpa
- Available for customized plug
- International patent - Reliable performance despite inconsistent compressed air pressure
- Quick response time when deep vacuum is needed



Specifications

Description	VCX303
Max. Vacuum level	-95 kPa
Open Vacuum flow	310 NI/min
Max. Feed pressure	6 bar
Temperature	-20 ~ 80 °C
Material	PPS,POM,NBR,AL(Holding plug)
Weight	24.12 g

Vacuum Flow

Model	Max. vacuum (-kPa)	Feed Pressure (bar)	Vacuum flow (NI/min) at different vacuum levels (-kPa)									
			0	10	20	30	40	50	60	70	80	90
VCX303	95	4.5	266	192	130	82	52	43	31	20	12	1
	94.8	5	282	203	133	116	70	42	30	20	12	1
	94.5	6	310	223	132	122	101	60	27	19	9	1

Evacuation Time

Model	Feed Pressure (bar)	Air Consumption (NI/min)	Evacuation time in sec / liter to reach different vacuum levels (-kPa)									
			10	20	30	40	50	60	70	80	90	
VCX303	4.5	124	0.013	0.071	0.144	0.25	0.33	0.61	0.8	1.3	3.1	
	5	126	0.013	0.07	0.129	0.23	0.3	0.57	0.75	1.2	3.1	
	6	140	0.011	0.058	0.1	0.18	0.24	0.48	0.62	1.1	3	

Build an Ordering No.

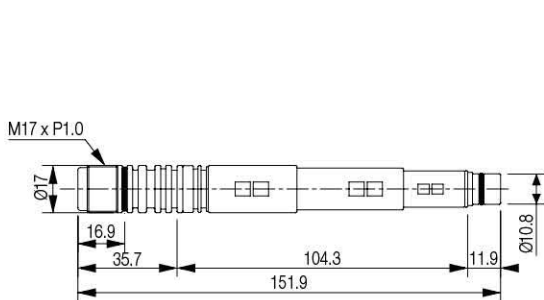
1. Cartridge	Description	Ordering No.
	Midi vacuum "X" cartridge, 3-stage	VCX303
	Midi vacuum "X" cartridge, 3-stage , Non-return valve	VCX303-N
	Midi vacuum "X" cartridge, 3-stage, Holding plug	VCX303P
	Midi vacuum "X" cartridge, 3-stage, Holding plug, Non-return valve	VCX303P-N
	Midi vacuum "X" cartridge, 3-stage, M25 Two-fold silencer	VCX303S
	Midi vacuum "X" cartridge, 3-stage, M25 Two-fold silencer, Non-return valve	VCX303S-N

Spare Parts – Plug

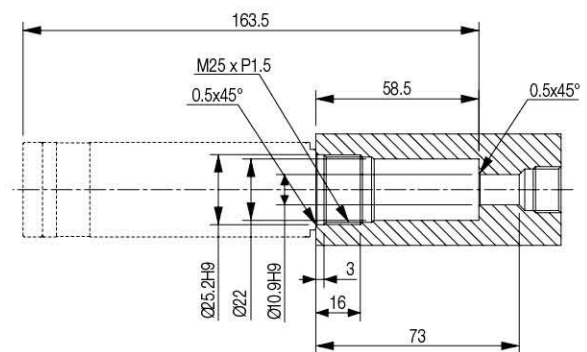
Model	Description	Weight (g)
VC-M25-303	Holding plug	59.32
VTTS-M25	M25 Two-fold silencer	78.34

Dimension - Basic Pump

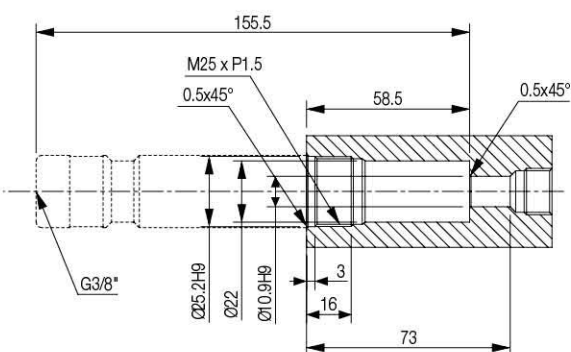
[Unit : mm]



VCX303



VCX303S



VCX303P