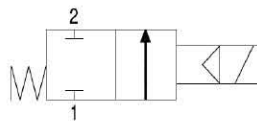


# CONTROL VALVES

## MS18

### Features and Strengths

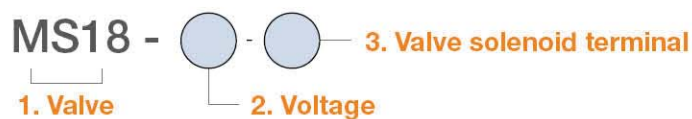
2/2way solenoid valve  
 Compact size with high air flow rate  
 Easily detachable Pin-type connection



### Specifications

Model	MS18
Connection	G1/8"
Normal flow	1,230 NI/m
Pressure range	2.5 ~ 7 bar
Temperature range	-18 ~ 65 °C
Material	NYLON, AL, SUM, Ni, SS, CuZn, NBR, PPS
Standard voltage	AC : 110V, 220V – 50/60Hz DC : 24V
Power consumption	0.85 ~ 1.3W
Weight	25g

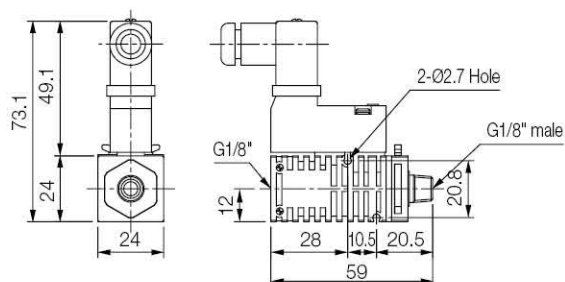
### Build an Ordering No.



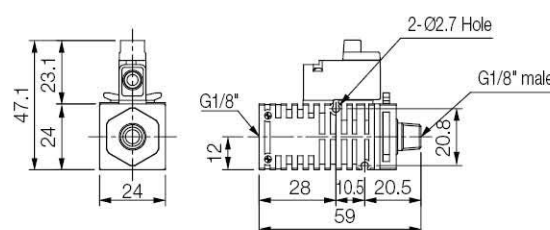
1. Valve	Description	Ordering No.
	2/2 way solenoid valve, G1/8" female inlet	MS18
	2/2 way solenoid valve, G1/8" male inlet	MS18M
	2/2 way solenoid valve, Non plug	MS18C
2. Voltage	Description	Ordering No.
	AC110V	1
	AC220V	2
	DC24V	3
3. Valve terminal	Description	Ordering No.
	Solenoid Terminal, DIN, No LW	1
	Solenoid Terminal, DIN, Lamp, No LW	2
	Solenoid Terminal, Conn, Lamp & 0.3m LW: <i>Only available with DC24V</i>	3

### Dimensions

[ Unit : mm ]



[DIN type]



[Connector type]