

SUCTION CUPS / Oval Curve

VOC11x23



Features and Strengths

Good for long objects with flat and curved surfaces
Strong lifting force and long life-span

Examples of use

Long flat objects, Curved surface, Metal panels, Automobile bumpers
Wood panel, Furniture



Recommended Lifting Force (Max.)

Model	Volume (cm ³)	Lifting Force (Kg) - Perpendicular			Lifting Force (Kg) - Parallel		
		- 20 kPa	- 60 kPa	- 90 kPa	- 20 kPa	- 60 kPa	- 90 kPa
VOC11x23	2.00	0.61	1.30	1.60	0.60	1.20	1.50

※ The lifting force above does not include safety factor

Material Specifications

Material	Hardness Shore (°)	Color	Temperature (°C)
NBR	60	Black	-20~110
Silicone	55	Red	-70~200
White Silicone	55	Translucent White	-70~200
White Silicone (FDA)	55	Translucent White	-70~200
High temp. Silicone	50	Blue	-70~280
Conductive Silicone	70	Smoky Black	-45~90
Urethane	60	Dark Green	0~100
Mark Free	75	Black	-10~100

Material Resistance

Description	NBR	Silicone	White Silicone	High temp. Silicone	Conductive Silicone	Urethane	Mark Free
Wear Resistance	Excellent	Good	Good	Good	Good	Excellent	Good
Oil	Excellent	Poor	Poor	Poor	Poor	Excellent	Excellent
Weather / Ozone	Fair	Excellent	Excellent	Excellent	Excellent	Excellent	Excellent
Alcohol	Good	Good	Good	Good	Good	Fair	Good
Acid	Fair	Poor	Poor	Poor	Poor	Poor	Excellent

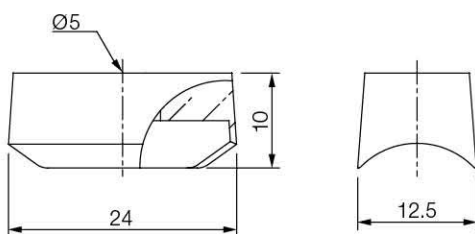
Build an Ordering No.

VOC11x23 - 
1. Suction Cup

1. Suction cup	Description	Weight (g)	Symbol
	Oval-Curved suction cup, 11x23mm diameter, Nitrile (NBR)	1.53	VOC11x23-N
	Oval-Curved suction cup, 11x23mm diameter, Silicone	1.48	VOC11x23-S
	Oval-Curved suction cup, 11x23mm diameter, White silicone	1.46	VOC11x23-WS
	Oval-Curved suction cup, 11x23mm diameter, White silicone (FDA)	1.46	VOC11x23-WS (FDA)
	Oval-Curved suction cup, 11x23mm diameter, High temperature silicone	1.58	VOC11x23-HS
	Oval-Curved suction cup, 11x23mm diameter, Conductive silicone	1.51	VOC11x23-CS
	Oval-Curved suction cup, 11x23mm diameter, Urethane	1.58	VOC11x23-U
	Oval-Curved suction cup, 11x23mm diameter, Mark free	1.65	VOC11x23-A

Dimension

[Unit : mm]



[Rubber Part]